

INTRODUCTION



Thanks for attending our information session. We value you taking time to learn more about our proposed Energy-from-Waste plant. Now that we have completed our expert reports we are in a position to answer your questions with technical detail.

As you know, we are proposing to build and operate New Zealand's first Energy-from-Waste plant near Waimate.

After 30 years of evolution these modern plants operate safely throughout the world. The technology that will be used in this proposed plant is at the cutting edge of environmentally friendly waste disposal.

Many of our South Island landfills are old and failing, as was seen with the 2019 Fox River landfill environmental disaster. Landfills have flooded during Cyclone Gabrielle and at least 321 old landfills nationwide risk blowout from climate change induced weather such as severe flooding. Landfills also emit methane – which is the second largest contributor to global climate change.

We respect that people have strong feelings and concerns about this plant being in Glenavy. We are very keen to hear your thoughts and answer all your questions.

To proceed with the plant, resource consents are required from both Environment Canterbury and the Waimate District Council. We have asked the councils to publicly notify our application to allow people to have their say on the project.

We have completed all our reports for our resource consent, except for a cultural impact assessment and we are working with local iwi on that now.

A number of local and international experts have produced 20-plus reports for the consent process and we encourage you to read them.

These include reports on human health and air quality, a life cycle analysis of the plant's carbon footprint compared to landfills, landscape effects, visual and noise impacts and traffic management into and around the plant.

These can be read at <https://www.projectkea.co.nz/about>.

We also are constantly updating our questions and answers on the website and they can be found at <https://www.projectkea.co.nz/questionsandanswers>.

We are committed to providing all the information we have to help answer any questions or concerns you might have. If you have specific questions that are not covered on the website you can send them to me at paul@sirrl.co.nz and we will get back to you.

PAUL TAYLOR
SIRRL Director

“We cannot keep burying our waste and making it our children’s problem.”



New Zealand is facing a **landfill crisis**



Sustainable waste management solutions as alternatives to landfill, such as **Energy-from-Waste technology** must be considered



Energy-from-Waste uses rubbish that’s destined to go to landfill as **fuel for generating power**



Proven technology
more than 2,500 Energy-from-Waste plants operate worldwide

The proposed Energy-from-Waste plant will:

- Deliver **30 megawatt of power as electricity** into the region, improving electricity security and potentially encouraging more companies to move to the Waimate area.
- Treat **365,000 tonnes per year of municipal and construction solid waste**, that would otherwise go to landfill and emit methane, a greenhouse gas and contributor to global climate change.
- Recover **5,500 tonnes per year of recyclable metal** (both ferrous and non-ferrous).
- Expect to recycle **100,000 tonnes per year of aggregate** for construction and concrete manufacture.
- **Supply steam energy to local business** to support their decarbonisation strategies.
- Be **designed and operated** to the highest New Zealand and international standards.

Facts about the proposed Energy-from-Waste plant:

- Energy-from-Waste technology has considerable **environmental benefits** compared to landfills, which are still being granted resource consents throughout New Zealand.
- **15 hectares of land near Glenavy** has been purchased to build the proposed plant. The final land sale is subject to a resource consent being granted.
- The proposed plant will **eliminate the leachate risk** that exists with landfills, particularly those near coastal areas.
- It will **stop the risk to land areas and ecosystems** that would otherwise be consumed or destroyed by future landfills.
- It will **eliminate the future exposure and clean up risk** that exists with landfills.
- There will be **no smelly odour** associated with landfills.
- It will **not accept sorted recyclable material or hazardous waste** for disposal.
- The plant and its technology has **no connection to any other New Zealand-based proposals** past or present, this includes recent plans to develop a pyrolysis plant in Feilding, in the Manawatū.

Proposed Energy-from-Waste Facility

A practical solution for the recovery and reuse of waste with the generation of energy.

ABOUT PROJECT KEA



New Zealand's first **Energy-from-Waste facility**



Proposed site, **Glenavy, South Island**

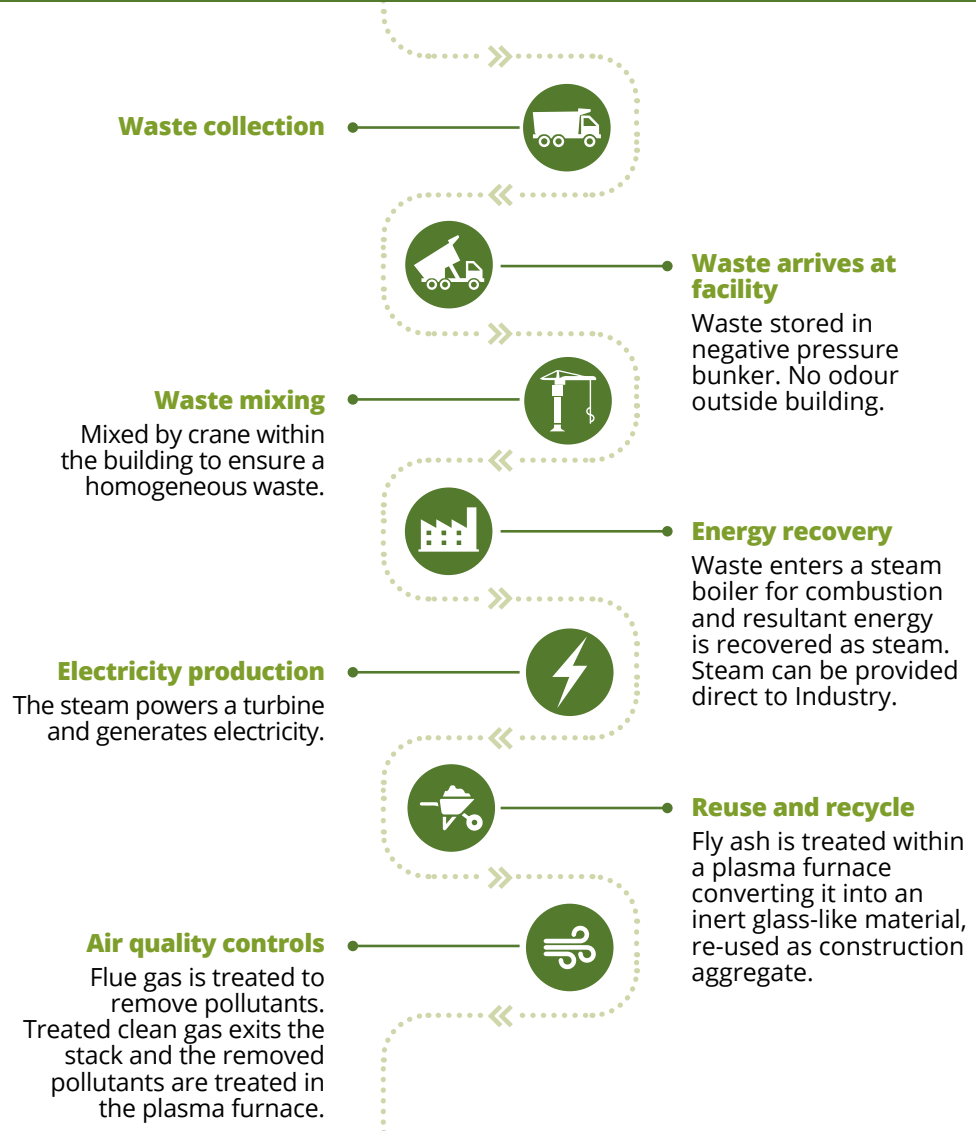


Waste is expected **from councils and refuse transfer stations** (not sorted recycling) throughout the South Island and **from construction companies and contractors**



Using **proven world-leading best available technology** and the most stringent environmental management practices

ENERGY-FROM-WASTE PROCESS



ENVIRONMENTAL AND ECONOMIC BENEFITS



When the proposed \$350 million plant proceeds it is estimated it will provide **359 jobs per year** across the two-year construction period



More than **100 jobs** direct and indirect on completion of plant



When resource consent is granted, and the plant is built, it will process **365,000 tonnes annually** of non-recyclable waste that is currently sent to landfill, producing methane



Energy-from-Waste will go hand-in-hand with **waste reduction, reuse and recycling**

Project Kea Consenting Process Timeline

